

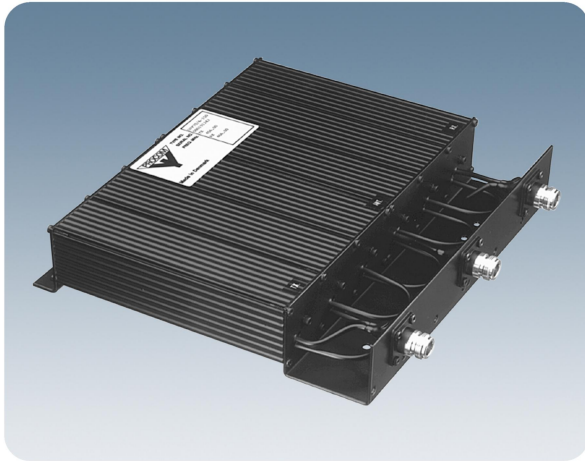
DPF 70/6-150...

6-Cavity base station duplexers for the 450 MHz band

DESCRIPTION

- 150 W base station duplexers.
- Both the $\frac{1}{4} \lambda$ models and the $\frac{3}{4} \lambda$ models are continuously tunable from 406 to 470 MHz.
- Low insertion loss due to silver-plated, temperature compensated resonator elements in high-Q 40 x 40 mm cavities.
- Multi-channel tuning possible with slightly reduced data (factory tuning recommended).
- Fully environmentally tested.

DPF 70/6-150 cavity type $\frac{1}{4} \lambda$



DPF 70/6-150 cavity type $\frac{3}{4} \lambda$



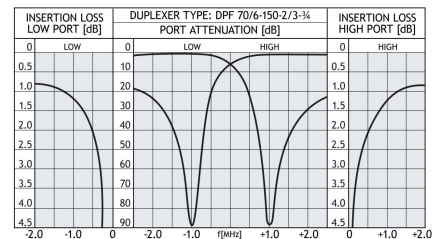
ORDERING DESIGNATIONS

TYPE	PRODUCT NO.	CAVITY TYPE	DUPLEX SPACING (MHZ)
DPF 70/6-150-2/3	200000369	$\frac{1}{4} \lambda$	2 - 3
DPF 70/6-150-3/5	200001617	$\frac{1}{4} \lambda$	3 - 5
DPF 70/6-150-5/7	200001610	$\frac{1}{4} \lambda$	5 - 7
DPF 70/6-150-7/9	200001615	$\frac{1}{4} \lambda$	7 - 9
DPF 70/6-150-9/11	200001612	$\frac{1}{4} \lambda$	9 - 11
DPF 70/6-150-11/13	200001872	$\frac{1}{4} \lambda$	11 - 13
DPF 70/6-150-13/15	200001873	$\frac{1}{4} \lambda$	13 - 15
DPF 70/6-150-2/3- $\frac{3}{4}$	200001689	$\frac{3}{4} \lambda$	2 - 3
DPF 70/6-150-3/5- $\frac{3}{4}$	200002062	$\frac{3}{4} \lambda$	3 - 5

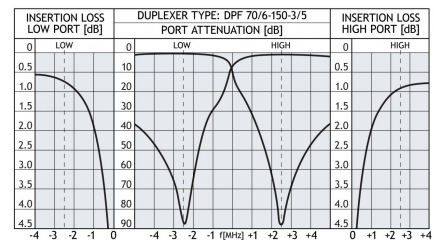
SPECIFICATIONS

ELECTRICAL				
MODEL	DPF 70/6-150-2/3- $\frac{3}{4}$		DPF 70/6-150-3/5	
CAVITY TYPE	$\frac{3}{4} \lambda$		$\frac{1}{4} \lambda$	
TX/RX FREQUENCY	406 - 470 MHz			
MAX. INPUT POWER	150 W			
TUNING	Single-channel tuned.	Single-channel tuned.	Single-channel tuned.	Multi-channel tuned.
	Spacing = 2 MHz	Spacing = 3.5 MHz	Spacing = 5 MHz	Spacing = 5 MHz
	100 W	100 W	150 W	Port width = 2 MHz 100 W
INSERTION LOSS TX - ANT. AND ANT. - RX	≤ 1.4 dB	≤ 1.3 dB	≤ 1.2 dB	≤ 1.4 dB
TX NOISE SUPPRESSION ON RX-FREQ.	> 70 dB	> 80 dB	> 80 dB	> 60 dB
RX ISOLATION ON TX-FREQUENCY	> 70 dB	> 80 dB	> 80 dB	> 60 dB
DUPLEX SPACING	2 - 3 MHz		3 - 5 MHz	
IMPEDANCE	Nom. 50 Ω			
SWR	≤ 1.5	≤ 1.5	≤ 1.5	≤ 1.5
MECHANICAL				
TEMP. RANGE	-30° C → +60° C			
FREQ. STABILITY	Approx. 4.5 ppm/° C			
CONNECTOR TYPE	N-female			
COLOUR	Black			
DIMENSIONS (L x W x H)	585 x 250 x 50 mm		260 x 250 x 50 mm	
WEIGHT	Approx. 4.6 kg		Approx. 2.5 kg	

TYPICAL RESPONSE CURVES



TYPICAL RESPONSE CURVES



PROCOM A/S reserve the right to amend specifications without prior notice.

18/12/14